

The Lichfield Festival presents

# second lichfield literature weekend



12 – 14 october 2007

in association with Best Western The George Hotel

[www.lichfieldfestival.org](http://www.lichfieldfestival.org)

**Welcome to the Lichfield Festival's second lichfield literature weekend.**

After the success of last year's inaugural literature weekend, I am delighted to welcome you to our second autumn offering.

From Cromwell to Conan Doyle, biographers to blasphemers, great Romantic poets to contemporary performance poetry, come and immerse yourself in the written and spoken word, and hear about the inspirations behind some of England's foremost writers and thinkers.

Lichfield has a strong literary history, and the Lichfield Festival is proud to continue that tradition.

I look forward to welcoming you to the stately surroundings of the Garrick Room at The George Hotel for a very English weekend.



**Richard Hawley**  
Festival Director



The Lichfield Festival gratefully acknowledges the generous support of many other corporate, private and anonymous sponsors, and all the publishers represented.

### Support the festival

To discuss potential sponsorship or if you want to make a donation, call Development Manager Vicki Stanley on 01543 306272, email [vicki.stanley@lichfieldfestival.org](mailto:vicki.stanley@lichfieldfestival.org) or write to her at 7 The Close, Lichfield WS13 7LD

Details are correct at time of publication. Lichfield Festival reserves the right to change or cancel the advertised programme.

Every attempt has been made to credit photographers

Brochure designed by Yellow. 01922 448989

Printed by J. M. Tatler & Sons Ltd, Derby

Printed on Rey Office Document 115gsm and 130gsm supplied by A1 Paper PLC

Lichfield Festival Ltd. Registered in England No.1592012 Charity No. 512201

## lichfield literary dinner

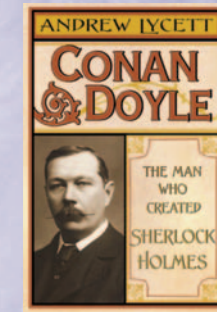
**Drinks 7pm, dinner 7.30pm** Garrick Room, The George Hotel

Our guest speaker, Andrew Lycett, worked as a foreign reporter for the BBC before becoming a literary biographer. He is the author of insightful lives of Ian Fleming, Rudyard Kipling and Dylan Thomas. His subject for this popular event is that of his latest book, *Conan Doyle: The Man who Created Sherlock Holmes*. Andrew will explore some of the strengths and perils of the art of biography, and examine the great themes of Conan Doyle's life, from the struggles of his personal life to his battle to reconcile the spiritual and scientific aspects of his nature and art.

Far from elementary!

**£35 (three-course dinner, excluding wine)**

Tickets are available in four easy steps: 1 gather your guests; 2 send full details together with a cheque dated **1 October 2007 and made out to 'Lichfield Festival'** for the number of guests multiplied by £35; 3 send in an envelope marked **LIT DIN** to 7 The Close, Lichfield WS13 7LD (all envelopes correctly marked will be time and date stamped); 4 sit back and wait. Once the dinner is at capacity, those on the waiting list will be contacted. **Use the booking form at the back of this brochure to book for events on 13/14 October only.**



saturday 13 october

## Thomas Cromwell

The Rise and Fall of Henry VIII's Most Notorious Minister  
Robert Hutchinson

11.30am-12.30pm The George Hotel

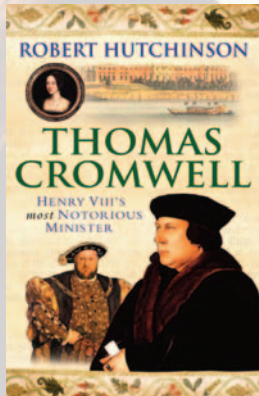
The son of a brewer, Thomas Cromwell rose from obscurity to become the most corrupt Chancellor in English history. He manoeuvred his way to the top by intrigue, bribery and sheer force of personality in a court dominated by the malevolent King Henry.

Tasked with engineering the judicial murder of Anne Boleyn, he tortured her servants and relations, then organized a show trial of Stalinist efficiency. He also orchestrated the greatest act of privatisation in English history: the seizure of the monasteries.

Robert Hutchinson spoke about Francis Walsingham at our first weekend; he returns with an equally riveting book about one of history's darkest and most compelling political figures.

£5

Box office: 01543 306276



[www.lichfieldfestival.org](http://www.lichfieldfestival.org)

## Blasphemy in the Christian World

David S. Nash

2-3pm The George Hotel

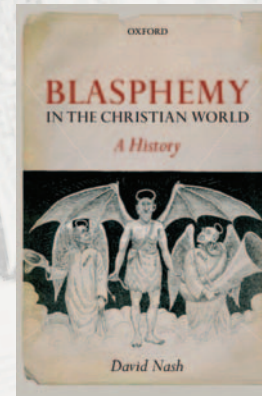
When blasphemy is discussed, temperatures are bound to rise. Once a seemingly medieval offence, it has re-emerged to become a distinctly modern presence in the West.

David Nash traces its history as a concept, from a species of heresy to modern understandings of it as a crime against religious identity. He investigates blasphemy in speech, literature, popular publishing and the cinema, and digs deep to find the likely motives and agendas of the blasphemers themselves, while also considering blasphemy's victims.

David taught 19th and 20th-century British history at the universities of Leicester and York. He is a fellow of the Royal Historical Society and an officer of the Social History Society of Great Britain.

£5

Box office: 01543 306276



[www.lichfieldfestival.org](http://www.lichfieldfestival.org)

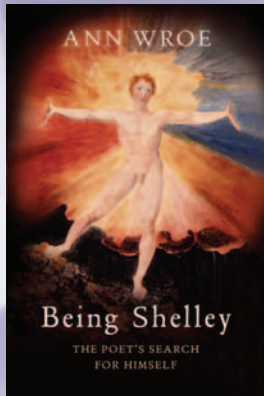
saturday 13 october

saturday 13 october

## Being Shelley

Ann Wroe

4-5pm The George Hotel



"Whence I came, and where I am, and why" were the questions that obsessed Percy Bysshe Shelley. Ann Wroe lays bare this spiritual and poetic quest and the result is Shelley as he has never been seen before.

"This book is an experiment. It is an attempt to write the life of the poet from the inside out... Sheer astonishment at Shelley's poems made me write (it); astonishment and regret that his spiritual force seems to have been largely forgotten... He has truly revolutionary things to suggest to us."

Ann Wroe is *The Economist's* briefings editor and obituarist. Her book *Pilate: The Biography of an Invented Man* was short listed for the Samuel Johnson Prize.

£5

Box office: 01543 306276

[www.lichfieldfestival.org](http://www.lichfieldfestival.org)

## Bird of Paradise

The Colourful Career of the First Mrs Robinson  
Sarah Gristwood

6-7pm The George Hotel



Mary Robinson began her career as actress, royal mistress, and inhabitant of a debtors' prison. She ended it, just two decades later, as a best-selling novelist, Romantic poet, and early feminist thinker of note.

But behind Mary's flaunting feathers – the dazzling façade she was always careful to present to the world – was a darker and more dramatic story. Dogged by ill health, she died early and in abject poverty – a victim of a flamboyant age and a celebrity obsessed culture that bears more than a passing resemblance to our own today.

Sarah Gristwood has worked as a journalist, specializing in the arts and women's issues.

£5

Box office: 01543 306276

[www.lichfieldfestival.org](http://www.lichfieldfestival.org)

© Robin Matthews

saturday 13 october

sunday 14 october

## The Plot Against Pepys

James Long & Ben Long

11.30am-12.30pm The George Hotel

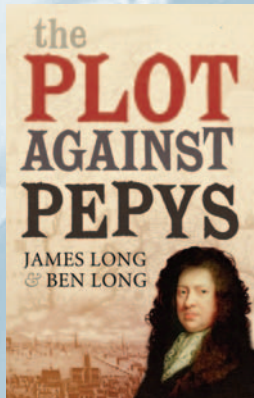
It is 1679 and England is awash with suspicion. Fear of conspiracy and religious terrorism has provoked panic in politicians and a zealous reaction from the legal system. Catholic agents are plotting to overthrow the king. Samuel Pepys, Secretary of the Admiralty, finds himself in a position few people then or now would have expected – charged with treason.

Imprisoned in the Tower of London and abandoned by the embattled king, Pepys knows that time is running out before his show trial and execution...

Using rare access to Pepys' own account of the affair, this father and son team brilliantly evokes this turbulent period in England's history and the most dangerous years in the life of the legendary diarist.

£5

Box office: 01543 306276



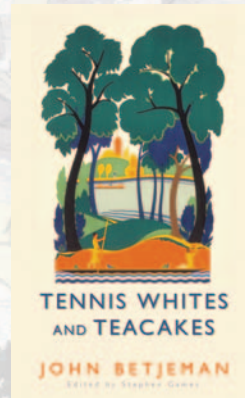
© Kim Sayer

www.lichfieldfestival.org

## Betjemans's England

Stephen Games

2-3pm The George Hotel



*Sweet Songs of Zion, Tennis Whites and Teacakes, Trains and Buttered Toast* – all these collections of the words of John Betjeman sum up a certain kind of Englishness.

Whether in his poetry or the radio talks that first made Betjeman a phenomenon, this was always his central topic. From fervent pleas for provincial preservation to explaining his choice of favourite hymns, Betjeman's words combined wit, nostalgia and criticism in a way that touched the soul of his readers and listeners.

All three collections are edited by Stephen Games. Stephen was unable to attend our first literature weekend, so we are delighted to welcome him to the second.

£5

Box office: 01543 306276

www.lichfieldfestival.org

sunday 14 october

sunday 14 october

## By Hook or By Crook

A Journey in Search of English

David Crystal

4-5pm The George Hotel

David Crystal is as close as we come to a 21st-century Dr Johnson, a populist linguist who has promoted the study and enjoyment of the English language for over 40 years and in nearly 100 books.

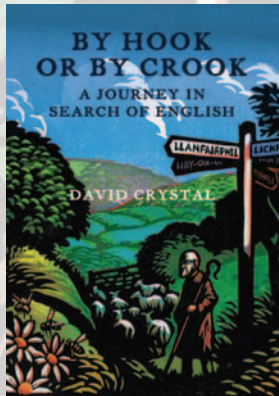
Now, he comes out from behind the scholarship to share his personal reflections, historical allusions and travel observations as he encounters the English language and its speakers from Bangor and Bombay to Stratford and San Francisco.

*By Hook or By Crook* is an attempt to capture the exploratory, seductive, teasing and tantalising nature of language study.

David is Honorary Professor of Linguistics at the University of Wales.

£5

Box office: 01543 306276



www.lichfieldfestival.org

## Wordsworth and Coleridge

The Friendship

Adam Sisman

6-7pm The George Hotel

The legendary friendship of Wordsworth and Coleridge is well known. But was it a relationship that helped them, or hindered?

Adam Sisman argues that it was a meeting that may well have been disastrous for both, for it was Wordsworth's rejection of Coleridge, and not primarily his opium addiction, that destroyed the latter as a poet, while Coleridge's impossible ambitions for Wordsworth pushed him towards failure and disappointment. Underlying the poignancy of the tale is the intriguing subject of the influence one writer can have on another.

Adam is the author of *A.J.P. Taylor: A Biography* and *Boswell's Presumptuous Task*, which won the National Book Critics Circle Award.

£5

Box office: 01543 306276



www.lichfieldfestival.org

sunday 14 october

sunday 14 october

# Bluebeard's Wives

8-9.30pm The George Hotel

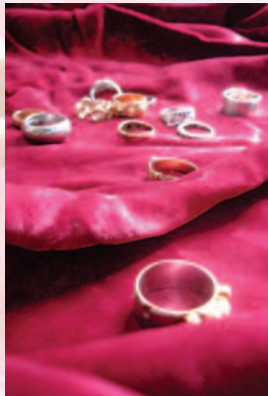
Julie Boden, poet in residence at Symphony Hall, Birmingham, invited 21 women to a performance of Bartók's *Duke Bluebeard's Castle*. *Bluebeard's Wives*, edited by Julie and University of Warwick Postgraduate Fellow Zoë Brigley, is the result. Drawing on theatre and music, their poems offer another look at the familiar myth. Their visit to Lichfield is hosted by this city's own Company of Poets, currently engaged on a similar project – to bring Lichfield Cathedral to life in the form of imagined *Stone Voices*.

Expect striking verse and lively discussion as the two groups of poets share their enthusiasm for this literary form.

Co-ordinated by Apples & Snakes in association with Heaventree Press

**Free**, but please reserve ticket with the box office

Box office: **01543 306276**



[www.lichfieldfestival.org](http://www.lichfieldfestival.org)



### Key

- 1 Literature weekend box office
- 2 The George Hotel
- P Long & short stay parking *Up to 12 hours*
- P Short stay parking *Up to 4 hours*
- P Short stay parking *Saturdays only*
- C Coach Park T Taxi Rank → One way street
- On-street parking for *Disabled badge holders*

*Please note. Car parking on Sundays is free. There is free parking for the disabled at every car park.*



**By road:** The A38 and A5 connect near Lichfield and give direct access to the motorway network – M6 Toll, M42, M50, M40, M5/6 and M1.

**National coach travel information:** telephone 01543 308209

**By train:** Direct rail services to Lichfield are operated by Central Trains and Virgin Trains, and via Birmingham by Silverlink and Chiltern Railways. Information: call 08457 484950 or go to [www.rail.co.uk](http://www.rail.co.uk) and [www.thetrainline.co.uk](http://www.thetrainline.co.uk)

**By air:** Birmingham International Airport (30 minutes drive) and East Midlands Airport (40 minutes drive)

orientation



Please fill in your details below

Title	First Name/Initials	Surname
Address		
Postcode		
Daytime telephone		Evening telephone
Email		
I enclose a cheque for £		(payable to Lichfield Festival Ltd)
or please debit by card Visa/Mastercard/Switch/Solo/Electron/Maestro		
Card number		
Expiry date	Valid from	Issue no (Switch only)
Cardholder's signature		Signature strip number

Please tick if you would like further information on The Lichfield Festival

Time	Author	Event
<b>Friday 12 October</b>		
7.30pm		lichfield literary dinner
<b>Saturday 13 October</b>		
11.30am	Robert Hutchinson	Thomas Cromwell: Henry VIII's Most Notorious Minister
2pm	David S. Nash	Blasphemy in the Christian World
4pm	Ann Wroe	Being Shelley
6pm	Sarah Gristwood	Bird Of Paradise: Mary Robinson
<b>Sunday 14 October</b>		
11.30am	James Long & Ben Long	The Plot Against Pepys
2pm	Stephen Games	Betjeman's England
4pm	David Crystal	By Hook or By Crook
6pm	Adam Sisman	Wordsworth and Coleridge
8pm		Bluebeard's Wives

All events are at The George Hotel, Bird Street, Lichfield, WS13 6PR, Tel: 01543 414822

Box office: 01543 306276

[www.lichfieldfestival.org](http://www.lichfieldfestival.org)

Best Western

# W The George Hotel

The George is a charming 18th century former coaching inn situated in the heart of Lichfield, just a 5 minute walk from Lichfield Cathedral and the Garrick theatre. There are 45 ensuite bedrooms, a cosy lounge bar which is open all day for morning coffee, bar snacks and afternoon teas, plus a magnificent Regency banqueting room which caters for conferences, weddings and celebrations of up to 110 guests.



**Reduced accommodation rates available for visitors to the Lichfield Literature Weekend**

The Best Western George Hotel, Bird Street, Lichfield, WS13 6PR  
T: 01543 414822 W: [www.thegeorgelichfield.co.uk](http://www.thegeorgelichfield.co.uk) E: [mail@thegeorgelichfield.co.uk](mailto:mail@thegeorgelichfield.co.uk)

 Best Western The George Hotel is part of Webb Hotels & Travel